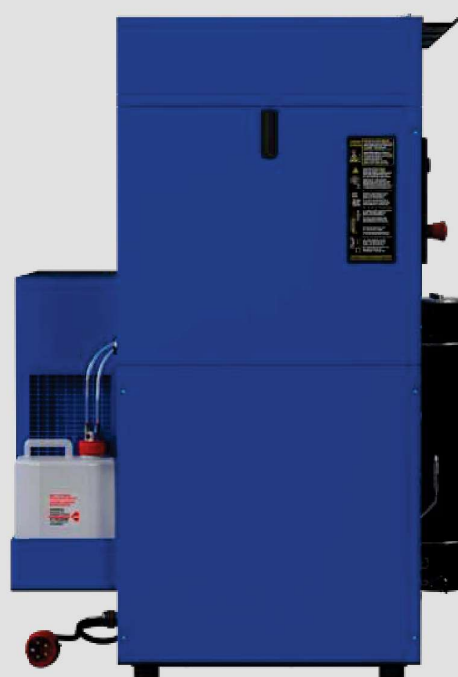


Prime line

Super Silent TPS

Electric



**Super Silent
TPS 235 ET**

**Super Silent
TPS 315 ET**

**Super Silent
TPS 345 ET**

**Super Silent
TPS 380 ET**

Charging rate

235 l/min

315 l/min

345 l/min

380 l/min

Refill time ¹

8.30 min

6.20 min

5.40 min

5.15 min

Engine power

4 kW

Three-phase electric

5,5 kW

Three-phase electric

7,5 kW

Three-phase electric

7,5 kW

Three-phase electric

¹ Filling time 10 l empty cylinder - 0/200 bar (tolerance ±5%)

Listen to its absolute silence.

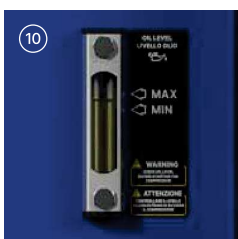
The **SUPER SILENT TPS** model is specifically designed to minimise noise. It features an enhanced cooling and sound insulation system and an efficient filtering system with two Hyperfilters. Powered by an electric motor, it has four different pumping units, all in the TPS (Tropical Plus Superdry) version, and an intuitive control panel. For longer filter life, we recommend the Tornado high pressure dryer.

Working pressure from 232 to 420 bar

Standard equipment

- | | |
|---|---|
| 1 | 2 filling connections to choose between
(1a) DIN 232, (1b) DIN 300 o (1c) INT/YOKE 232 bar |
| 2 | 2 filling hoses of 1.2 m length |
| 3 | Pressure maintaining valve |
| 4 | Interstage control gauges |
| 5 | Double filtering system Hyperfilter certified PED |
| 6 | Cabin temperature with automatic switch-off |
| 7 | Automatic condensate drain |

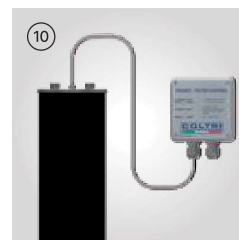
- | | |
|----|--|
| 8 | Phase controller that prohibits reverse rotation |
| 9 | Electronic pressure switch with automatic switch-off |
| 10 | Oil sight glass |
| 11 | Oil pump with filter and pressure gauge |
| 12 | Auto-drain Condensate System with condensate collection tank |
| 13 | Frame color Blu RAL 5002 |



Optional

- 1 Remote filling panel
Single pressure 4 filling connections DIN 232
- 2 Remote filling panel
Single pressure 4 filling connections DIN 300
- 3 Remote filling panel
Double pressure 2 DIN 232 + 2 DIN 300
- 4 Remote filling panel with lever taps Pressure
Single 4 INT + 4 DIN 232 + 4 DIN 300
- 5 Remote filling panel with lever taps Pressure
Double 2 INT + 1 DIN 232 + 1 DIN 300
- 6 Filling connection with gauge DRV DIN 232 bar

- 7 Filling connection with gauge DRV DIN 300 bar
- 8 DIN/INT adapter
- 9 Filling connection DRV DIN/INT
- 10 Presec, filter control system
- 11 SAM sensors CO + CO₂ + H₂O
Available in version with VOC.
- 12 Tornado refrigerator - Dryer
Available in 350 bar or 420 bar versions.
- 13 Filling hose. Available: 1,5 m - 2,0 m
3,0 m - 4,0 m - 5,0 m - 8,0 m - 10,0 m
- 14 Stainless steel frame with MOQ



Dimensions

Width 90 cm (35.4")

Depth 93 cm (36.6")

Height 132 cm (52")

Dry weight

SUPER SILENT TPS 235 ET

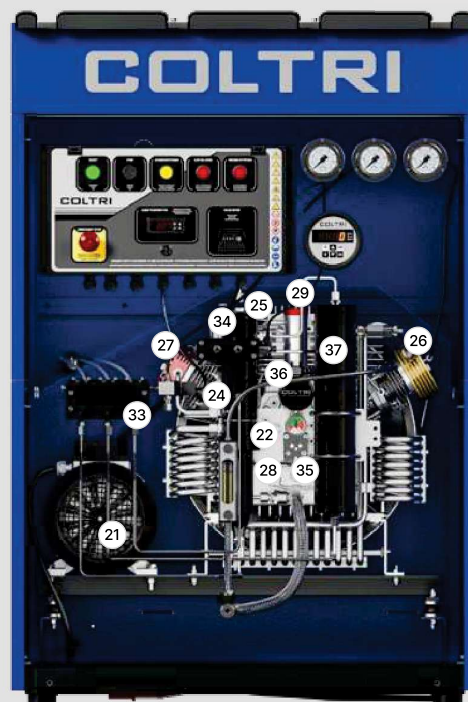
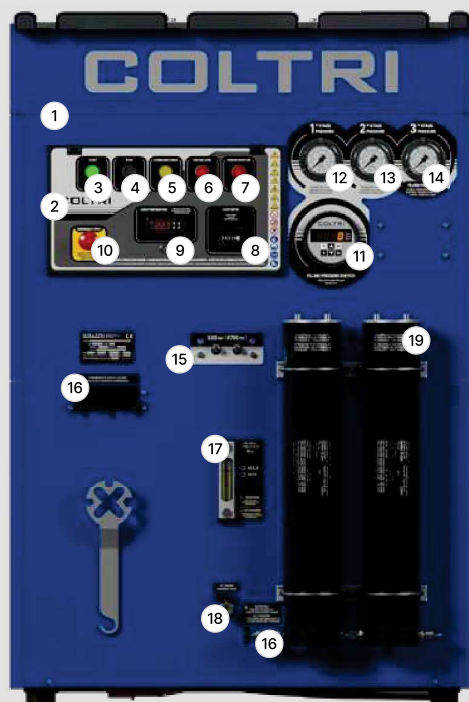
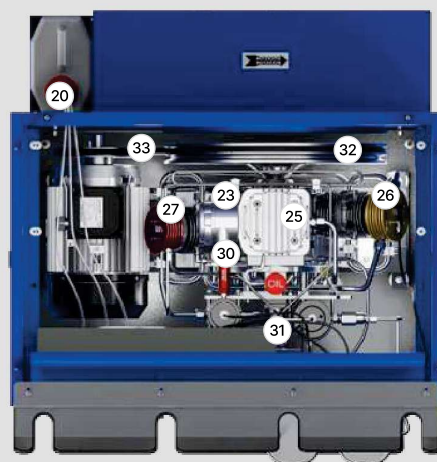
212 kg (467 lb)

SUPER SILENT TPS 315 ET

SUPER SILENT TPS 345 ET

SUPER SILENT TPS 380 ET

222 kg (489 lb)



Machine parts

- | | | |
|--|--------------------------------|--|
| 1 Telaio | 13 2nd stage pressure gauge | 25 1st stage |
| 2 Control pannel | 14 1st stage pressure gauge | 26 2nd stage |
| 3 ON pushbutton | 15 Refill hoses connection | 27 3rd stage |
| 4 Stop pushbutton | 16 Condensate discharge valves | 28 Monobloc |
| 5 Condensate discharge pushbutton | 17 Oil level | 29 Oil filler plug |
| 6 Oil level warning light | 18 Oil discharge valves | 30 Safety valve |
| 7 Direction of rotation indicator light | 19 Purifier filter | 31 Maintenance valve |
| 8 Hour counter | 20 Condensate collection can | 32 Cooling fan |
| 9 Cabinet interior / cooling air temperature | 21 Motor | 33 Belt |
| 10 Emergency pushbutton | 22 Compressor | 34 HP condensate separator |
| 11 Automatic shutdown pressure switch | 23 Air filter | 35 Oil pump |
| 12 3rd stage pressure gauge | 24 LP condensate separator | 36 Oil filter |
| | | 37 HP High Efficiency condensate separator |