

Prime line

Ergo TPS

Electric



Ergo TPS
235 ET

Ergo TPS
270 EM¹

Ergo TPS
315 ET

Ergo TPS
345 ET

Ergo TPS
380 ET

Charging rate

235 l/min

270 l/min

315 l/min

345 l/min

380 l/min

Refill time²

8.30 min

7.20 min

6.20 min

5.40 min

5.15 min

Engine power

4 kW

Three-phase electric

5,5 kW

Single-phase electric

5,5 kW

Three-phase electric

7,5 kW

Three-phase electric

7,5 kW

Three-phase electric

¹ Data referred to the maximum pressure of 300 bar

² Filling time 10 l empty cylinder - 0/200 bar (tolerance ±5%)

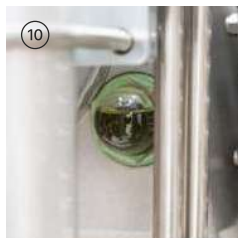
Less is more.

ERGO TPS is the best solution for those who want a compact breathing air compressor without compromising on high performance. Equipped with four different TPS (Tropical Plus Superdry) pumping units, ERGO TPS is powered by electric motors or engines (Honda for the petrol version, Kohler for the diesel compressors). It has a panel with a monitoring system complete with pressure gauges, autostop with adjustable electronic pressure switch, automatic condensate drain and rotation direction control. It also has two connections for high pressure hoses and an improved filtering system with two Hyperfilters. The remote charging panel is available as an option.

Working pressure from 232 to 420 bar

Standard equipment

1	2 filling connections to choose between (1a) DIN 232, (1b) DIN 300 o (1c) INT/YOKE 232 bar	8	Phase controller that prohibits reverse rotation
2	2 filling hoses of 1.2 m length	9	Electronic pressure switch with automatic switch-off
3	Pressure maintaining valve	10	Oil sight glass
4	Interstage control gauges	11	Oil pump with filter and pressure gauge
5	Double filtering system Hyperfilter certified PED	12	Auto-drain Condensate System with condensate collection tank
6	Cabin temperature with automatic switch-off	13	Carrying handles
7	Automatic condensate drain	14	Frame color Blue RAL 5002



Optional

1	C-Monitor	7	Filling connection with gauge DRV DIN 232 bar
2	Remote filling panel Single pressure 4 filling connections DIN 232	8	Filling connection with gauge DRV DIN 300 bar
3	Remote filling panel Single pressure 4 filling connections DIN 300	9	DIN/INT adapter
4	Remote filling panel Double pressure 2 DIN 232 + 2 DIN 300	10	Filling connection DRV DIN/INT
5	Remote filling panel with lever taps Pressure Single 4 INT + 4 DIN 232 + 4 DIN 300	11	Presec, filter control system
6	Remote filling panel with lever taps Pressure Double 2 INT + 1 DIN 232 + 1 DIN 300	12	Filling hose. Available: 1,5 m - 2,0 m 3,0 m - 4,0 m - 5,0 m - 8,0 m - 10,0 m
		13	Wheel kit
		14	Stainless steel frame with MOQ



Dimensions

Width 112 cm (44.1")

Depth 63 cm (24.8")

Height 77 cm (30.3")

Dry weight

ERGO TPS 235 ET

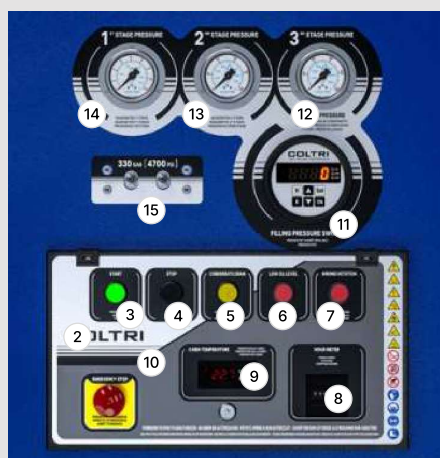
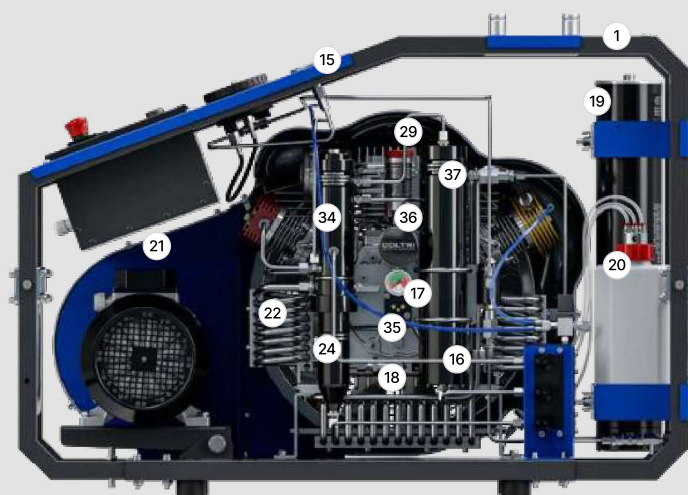
174 kg (384 lb)

ERGO TPS 270 EM / ERGO TPS 315 ET

184 kg (406 lb)

ERGO TPS 345 ET / ERGO TPS 380 ET

184 kg (406 lb)



Machine parts

- | | | |
|--|--------------------------------|--|
| 1 Frame | 13 2nd stage pressure gauge | 26 2nd stage |
| 2 Control panel | 14 1st stage pressure gauge | 27 3rd stage |
| 3 ON pushbutton | 15 Refill hoses connection | 28 Monobloc |
| 4 Stop pushbutton | 16 Condensate discharge valves | 29 Oil filler plug |
| 5 Condensate discharge pushbutton | 17 Oil level | 30 Safety valve |
| 6 Oil level warning light | 18 Oil discharge valves | 31 Maintenance valve |
| 7 Direction of rotation indicator light | 19 Purification system | 32 Cooling fan |
| 8 Hour counter | 20 Condensate collection can | 33 Belt |
| 9 Cabinet interior / cooling air temperature | 21 Electric motor | 34 HP condensate separator |
| 10 Emergency pushbutton | 22 Pumping unit | 35 Oil pump |
| 11 Automatic shutdown pressure switch | 23 Air filter | 36 Oil filter |
| 12 3rd stage pressure gauge | 24 LP condensate separator | 37 HP High Efficiency condensate separator |
| | 25 1st stage | |